

Friends of Imperial College Membership form

Please support Friends by joining and paying an annual subscription, preferably by Standing Order. Fill in both sides of the form sections 1 to 4 and send it to Jill Cook, Friends' Administrator, at the address below. Alternatively fill in your details and join directly on our website at www.friendsofimperial.org.uk

Annual subscription costs £20 per individual member.

1. Applicant information

Title First name

Last name

Email

Phone

Address

Postcode Country

Please indicate your connection with Imperial College by ticking one or more of the following:

Alumnus Staff Student Parent Live locally

Donor Other None

Please send your membership form by post (together with your cheque if applicable) to:

The Administrator
Friends of Imperial College
8 Stumps End, Bosham, PO18 8RB
Email: admin@friendsofimperial.org.uk

Telephone enquiries to Jill Cook:
01243 576150

An invitation to join Friends of Imperial College

Friends organises lectures, visits and social events at Imperial College, a world-leading science-based university with an academic faculty of the very highest international quality and reputation.

Friends offers you the opportunity to explore many areas of science, technology and medicine. One of our aims is to keep the public informed of the great scientific advances being made in a way that the non-specialist can understand. Our lectures have received considerable praise for their clarity and interest – and the socialising is fun too.

Our programme this year has world-class speakers and provides unique opportunities to go behind the scenes of College departments to find out what is really happening. Afterwards, you can meet our speakers and other guests over refreshments. A *Friends'* table is booked in a nearby restaurant for those who wish to continue enjoying the evening.

Membership of *Friends* offers you reduced prices for our events, membership of Ethos, the sports centre in Prince's Gardens, as well as some courses and other facilities at the College. By joining *Friends* you will be supporting our mission of widening knowledge of science amongst the public. You will also be supporting the Imperial College Student Opportunities Fund to which we make a substantial donation each year.

If you would like to join a lively-minded group of people interested in all aspects of science, then *Friends* is for you. To know more, visit our website, or simply come along to one of our events as a guest: you will be very welcome. To become a member, fill in the membership form on this programme and return it to us.

We look forward to seeing you soon.



Roderick Rhys Jones
Chairman, Friends of Imperial College

Friends of Imperial College,
8 Stumps End, Bosham, PO18 8RB
Telephone: **01243 576150**
Email: admin@friendsofimperial.org.uk

FRIENDS SUPPORTS IMPERIAL COLLEGE
STUDENT OPPORTUNITIES FUND

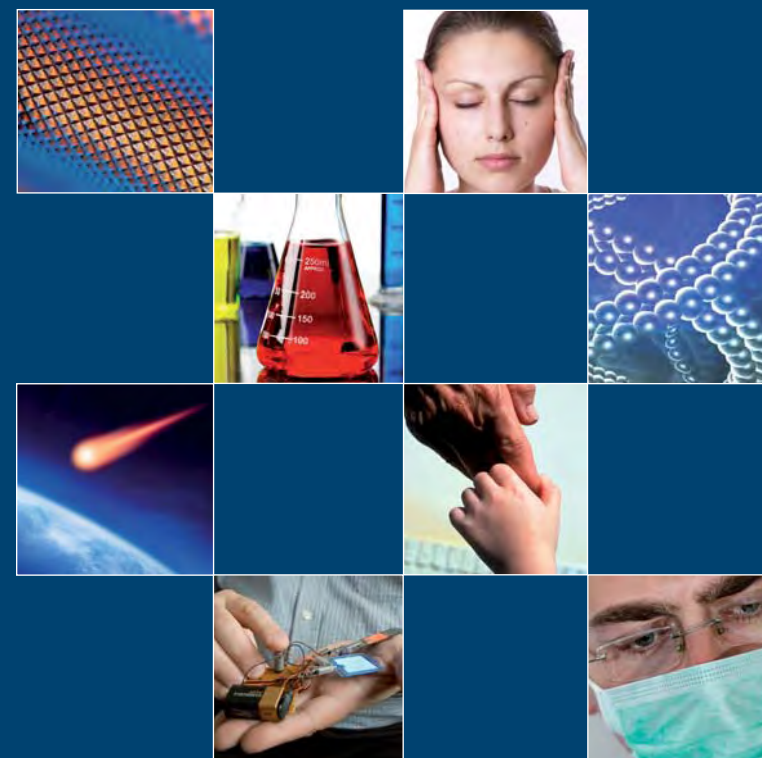
Imperial College
London

Friends of Imperial College

2011-2012

Programme of events

WELCOME



www.friendsofimperial.org.uk

FRIENDS SUPPORTS IMPERIAL COLLEGE
STUDENT OPPORTUNITIES FUND

2011-2012 Programme of events

SPONSORED BY WINTON CAPITAL MANAGEMENT LIMITED



MATERIALS

MONDAY 26 SEPTEMBER 2011 6.15 PM

Behind-the-scenes @ Department of Materials

Members and their guests only

Professor Neil Alford, Head of the Department of Materials

An opportunity to visit laboratories ranked in the top three in the world and see work on metals, ceramics, semiconductors, polymers, functional materials and more.



BIOLOGY

TUESDAY 18 OCTOBER 2011 7.00PM

The extended mind: recent experimental evidence

Dr Rupert Sheldrake, Fellow of the Institute of Noetic Sciences, California, USA

Our minds seem to extend out beyond our brains both through attention and intention. Rupert Sheldrake will talk about recent evidence for the sense of being stared at and telepathy in people and animals.



CHEMISTRY

TUESDAY 8 NOVEMBER 2011 6.00PM AGM
7.00PM LECTURE

Celebrating chemistry - past, present and future

Emeritus Professor David Phillips OBE, President of the Royal Society of Chemistry

In this UN International Year of Chemistry, inspired by the Centenary of Marie Curie winning the Nobel Prize for Chemistry, David Phillips will be examining how chemistry has helped us to understand our world and where new knowledge is leading us.



MEDICINE

THURSDAY 2 FEBRUARY 2012 7.00PM

The human genome: 21st Century medicine

Professor Timothy Aitman, Consultant Physician, Imperial Academic Health Sciences Centre, Chair in Clinical and Molecular Genetics, Head of Molecular Genetics and Rheumatology

Gene discovery is being exploited in cell biology leading to the development of new predictive, preventative and therapeutic approaches, including gene and cell-based therapies. The goal is to link genetics and genomics to every medical speciality within the College. An over-the-horizon view of the coming genetic revolution.

LECTURES: MEMBERS £5, COLLEGE STAFF £3, STUDENTS £3,
ALUMNI £10, OTHERS £10.
BEHIND-THE-SCENES: MEMBERS AND THEIR GUESTS ONLY



COSMOLOGY/EARTH SCIENCES

THURSDAY 15 MARCH 2012 7.00PM

Where does life come from?

Dr Zita Martins, Royal Society University Research Fellow

"I'm trying to answer two questions. How did life start on Earth? And are we alone in the universe? We know there were simple molecules on the early Earth that evolved to more complex structures. Then there was a jump where nobody knows what happened, and we had life."



HEALTH

WEDNESDAY 18 APRIL 2012 6.15 PM

Behind-the-scenes @ Lifelong Health Project

Members and their guests only

Armand Marie Leroi, Professor of Evolutionary Developmental Biology

The unprecedented increase in the number of elderly has many repercussions for financial, social and medical aspects of day-to-day life. Population ageing represents a global challenge and although the increased life expectancy symbolises a scientific success story, it brings new challenges.



ELECTRONICS

TUESDAY 15 MAY 2012 7.00PM

Plastic electronics: the coming revolution

Professor Donal Bradley, Lee-Lucas Chair of Experimental Physics, Deputy Principal of the Faculty of Natural Sciences, Director of Centre for Plastic Electronics

The nano-scale printing and coating of materials on a wide range of plastics has the potential to impact on multiple applications in energy, environment, consumer electronics and healthcare.



TECHNOLOGY/HEALTH

TUESDAY 12 JUNE 2012 7.00PM

Changing lives globally: technological innovation for health

Professor the Lord Darzi of Denham PC, KBE, Paul Hamlyn Chair of Surgery, Chairman, Institute of Global Health Innovation

Healthcare systems worldwide are facing completely different pressures compared with 20 years ago. Life expectancy has increased dramatically, lifestyle diseases such as obesity are rife, and non-communicable diseases such as diabetes are increasing in developing countries as well as in the West. We can't just build more hospitals or buy more beds: the whole way in which we provide healthcare has got to change.

THERE IS A WINE RECEPTION AFTER EACH EVENT INCLUDED IN THE TICKET PRICE.

AFTER EACH LECTURE A FRIEND'S TABLE IS BOOKED AT A LOCAL RESTAURANT. EVERYONE IS WELCOME.

Friends of Imperial College Membership form

2. Payment method

Please indicate how you intend to pay your subscription. A standing order is preferred.

I wish to pay for my subscription by the following means: (please tick box)

- Standing order by post (3 and 4 below)
- Standing order by internet (3 and 4 below)
- Internet credit transfer (4 below)
- Cheque by post payable to Friends of Imperial College (4 below)

3. Standing order payment

Please make out your Standing Order Form by visiting your Bank, by telephone or on the Internet. Please arrange to pay £20 now and £20 thereafter on 1 October annually.

BANK	BRANCH	SORT CODE
NatWest	South Kensington Station	51-50-01
ACCOUNT NUMBER	ACCOUNT NAME	
64615626	Friends of Imperial College London	

4. Authorisation

I have arranged payment to Friends of Imperial College as indicated above:

SIGNATURE(S)	DATE / /
--------------	----------

Please send this form by post to:
The Administrator
Friends of Imperial College
8 Stumps End, Bosham, PO18 8RB
Email: admin@friendsofimperial.org.uk

Telephone enquiries to Jill Cook:
01243 576150